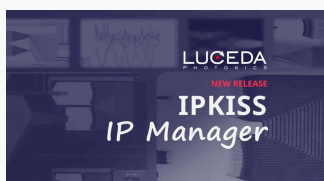
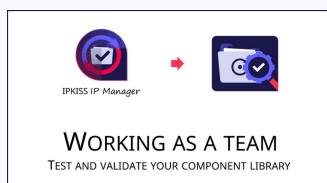


In this issue



New product release:
**IPKISS
IP Manager**

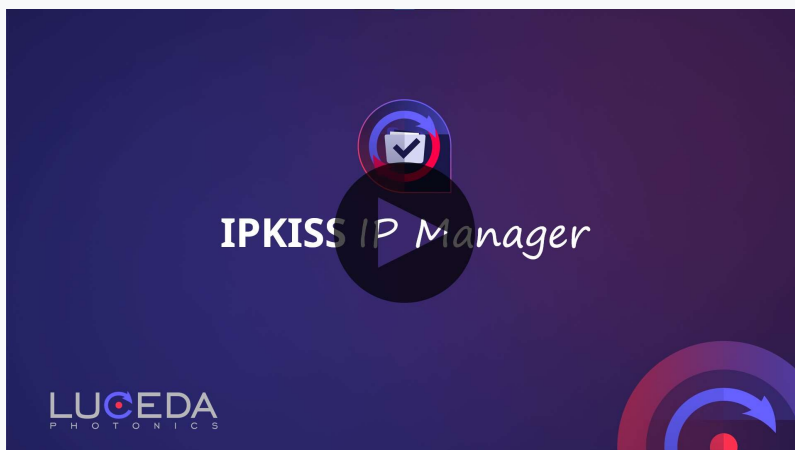


New tutorial:
Test and validate your
component library



Updated training
agenda

Meet the new IPKISS IP Manager



[DISCOVER IPKISS IP MANAGER](#)

[TRY IT OUT](#)

Our new product, IPKISS IP Manager, enables your design team to grow with confidence. IP Manager helps avoid costly mistakes by **testing and validating photonic IP** building blocks in various conditions during the design phase, such as layout, connectivity and simulation. This leads to a lower design iteration time and improved **knowledge sharing and retention**, empowering your team to keep fabricating high-quality PICs and reduce the time to market.

IPKISS 3.8

Layout and analysis improvements

This release adds the capability of creating **bundled connectors** with very little code. In addition, we introduced **Spectrum Analyzer** which allows to conveniently perform the analysis of optical transmission spectra. Head over to your **Luceda Customer portal** to download IPKISS 3.8.


[DOWNLOAD IPKISS 3.8](#)

Don't have an account yet? [Request portal access](#).
For a complete list of all the new features, please consult the [release notes](#).



Log into the Luceda customer portal
to download the Luceda Academy samples.

[LOG IN](#)



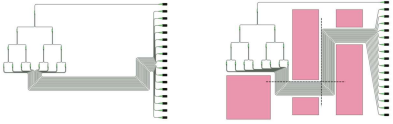
IPKISS IP Manager

WORKING AS A TEAM
TEST AND VALIDATE YOUR COMPONENT LIBRARY

Test and validate your component library

Learn how to use IPKISS IP Manager to automate the testing and validation of your photonics design IP.

[View >>](#)



WAVEGUIDE ROUTING
CONNECT MULTIPLE PORTS WITH
BUNDLED CONNECTORS

Waveguide bundle routing

Learn how to automate the routing of multiple ports using bundled connectors.

[View >>](#)

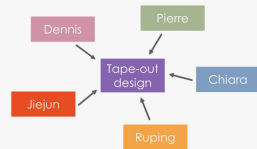


IPKISS LIBRARIES: ENRICHING FOUNDRY COMPONENTS WITH SIMULATED MODELS



IPKISS Libraries

Learn how to structure your IPKISS libraries and enrich foundry components with simulated models .

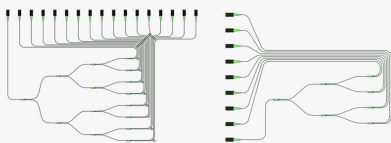
[View >>](#)

WORKING AS A TEAM

SEVERAL CONTRIBUTIONS TO ONE TAPE-OUT RUN

Working as a team: tape-outs

Learn how to collaborate with your team towards a tape-out design project.

[View >>](#)

ADVANCED ROUTING

Automate your waveguide routing with routing heuristics

Advanced routing

Learn how to define a routing heuristic to automate complex waveguide routing.

[View >>](#)

Training agenda *(English-speaking events)*

TRAINING	DATE	TIME		LINK
Getting started with PIC design #5	May 12	15:00 <i>Europe/Brussels</i> 8AM <i>US/Central</i>	Online	REGISTER
Active Silicon Photonics Fabrication Course 2022 (CMC)	May 30 - Jun 10	11AM - 2PM <i>US/Central</i>	Online	REGISTER
Getting started with PIC design #6	Jun 9	21:00 <i>Europe/Brussels</i> 2PM <i>US/Central</i>	Online	REGISTER
Introduction to Co-Packaged Opto-Electronics Design (<i>Europractice</i>)	Jun 15	14:30 <i>Europe/Brussels</i>	In-person	REGISTER
Integrated Quantum Photonics – From design to fab and integration (<i>Europractice</i>)	Jun 23	10:00 <i>Europe/Brussels</i>	Online	REGISTER



Do you need help? Or do you have any questions? The Luceda team is here for you!

Send an e-mail to support@lucedaphotonics.com. You will automatically get a reply, asking you to choose a password, so that you can track the progress of your tickets and those of your team on <http://support.lucedaphotonics.com>



[Unsubscribe](#) | [Contact](#)

©2021 All Rights Reserved